

Bajos

en Si_b

Música del día de San Marcial

Irún, 30 de Junio

Revisión: Angel Briz Lázcoz
2007

Diana de Villarrobledo

1
p *f* *p* *f*

9
mp *cresc...* *f*

15
3 1 2 3 1 2

26
f *a coda* ⊕

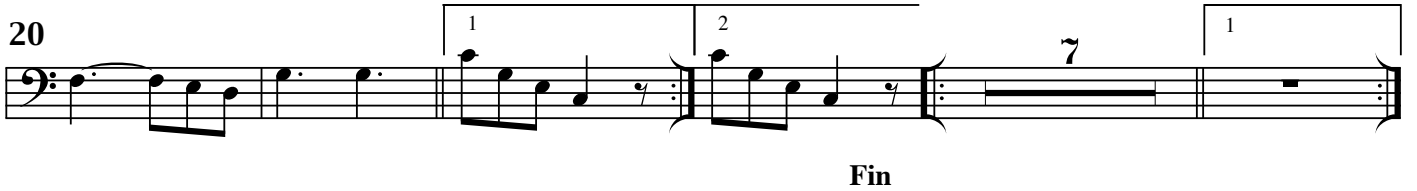
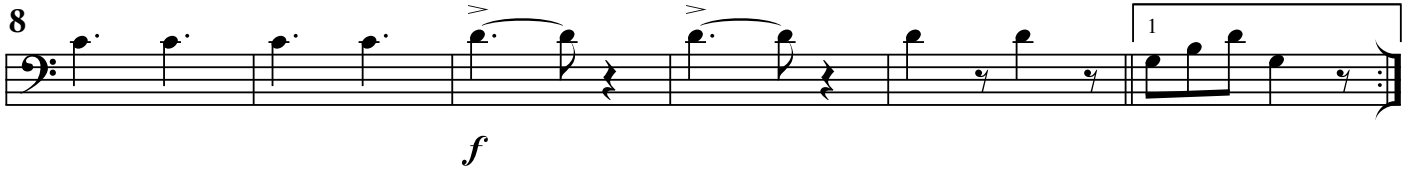
34
2 *menos, dolce* *p* *p*

44
1 2 *mf*

56
p *D. c. hasta la* ⊕ *y salta a Coda*

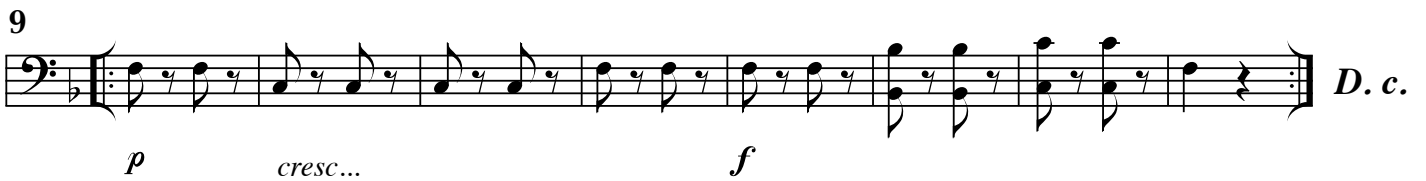
CODA 66

Rataplán



Descarga

Vivo



Fagina

Musical score for "Fagina" in bass clef, 2/4 time. The piece begins with a repeat sign and a forte (*f*) dynamic. The first line (measures 1-7) features a rhythmic pattern of eighth notes. The second line (measures 8-14) includes a first ending (1) and a second ending (2), both marked *f*. The third line (measures 15-21) continues the eighth-note pattern, marked *mf*. The fourth line (measures 22-28) concludes with a first ending (1) and a second ending (2), marked *f*, followed by the instruction "D. C. a la $\text{\$}$ " and "Fin".

Himno de San Marcial

Musical score for "Himno de San Marcial" in bass clef, 9/8 time. The piece starts with a first ending (1) and a second ending (2), marked *p* and *mf* respectively. The first line (measures 1-6) features a rhythmic pattern of eighth notes with a crescendo from *p* to *mf*. The second line (measures 7-13) continues this pattern, also marked *p* and *mf*. The third line (measures 14-20) concludes with a first ending (1) and a second ending (2), marked *mf*, followed by the instruction "D. c." and "Fin".

A. B. - San Marcial - 06/07